

## DESCRIPTION

The model CTU-xxxx is an open-loop Hall-effect current transducer. Hall-effect sensors detect the strength and direction of the magnetic flux created by current flowing in a conductor. Appropriate signal conditioning provides an output ( $\pm 5\text{Vdc}$ ) proportional to both the amplitude and direction of the measured current.

Ease of installation in either new or retrofit applications is provided by the compact split-core packaging. The unit is ruggedized for survival in harsh environments.

MODEL NUMBER	CURRENT RANGE AMPS DC INPUT
CTU-0050	$\pm 50$
CTU-0100	$\pm 100$
CTU-0150	$\pm 150$
CTU-0500	$\pm 500$
CTU-0800	$\pm 800$
CTU-1000	$\pm 1000$
CTU-1500	$\pm 1500$
CTU-2000	$\pm 2000$



## SPECIFICATIONS

### INPUT

Current..... Range ..... See Table  
 Over-Range (without damage)..... 10 times range

### OUTPUT

Type.....  $0\text{-}\pm 5\text{Vdc}$   
 Scaling..... -F.S./0/F.S. Input  $= -5/0/5\text{Vdc}$  Output  
 Loading.....  $\geq 2\text{k}\Omega$   
 Response ..... (to 90%) ..... 5ms typical

### DIELECTRIC TEST

Conductor through Window to Output ..... 1000Vdc  
 Instrument Power to Output..... 600Vdc

### ACCURACY

Setpoint, Linearity & Repeatability.....  $\pm 1.0\%$  F.S.  
 Zero Offset..... (after max. over-range) .....  $\leq \pm 20\text{mV}$

### INSTRUMENT POWER

Voltage.....  $12\text{Vdc} \pm 10\%$   
 Current.....  $\leq 35\text{mAdc}$

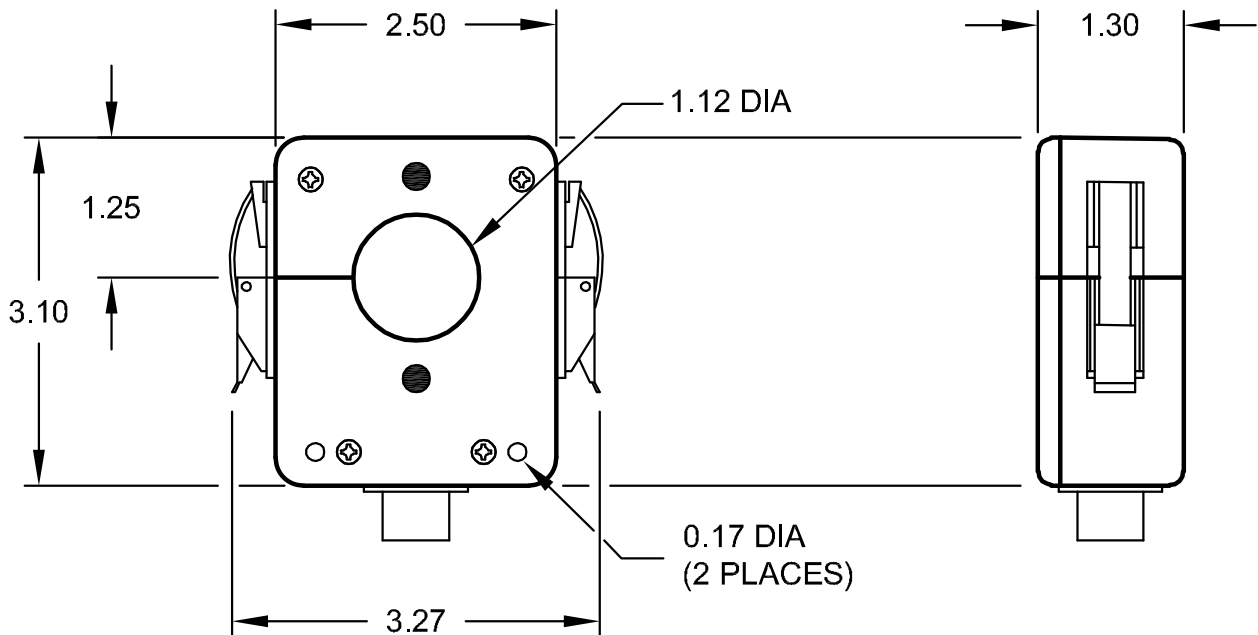
### TEMPERATURE

Operating Range .....  $-40$  to  $85^\circ\text{C}$   
 Effect .....  $\pm 0.04\%/^\circ\text{C}$

### PHYSICAL

Operating Humidity..... 0-95% non-condensing  
 Weight ..... (including cable).....  $\leq 0.75\text{lb.}$   
 Termination..... Supplied with 8 ft., 4-conductor, 22AWG, detachable cable  
 Shock & Vibration ..... Unit is ruggedized  
 Enclosure..... Noryl SE1X, Black

**CASE DIMENSIONS**

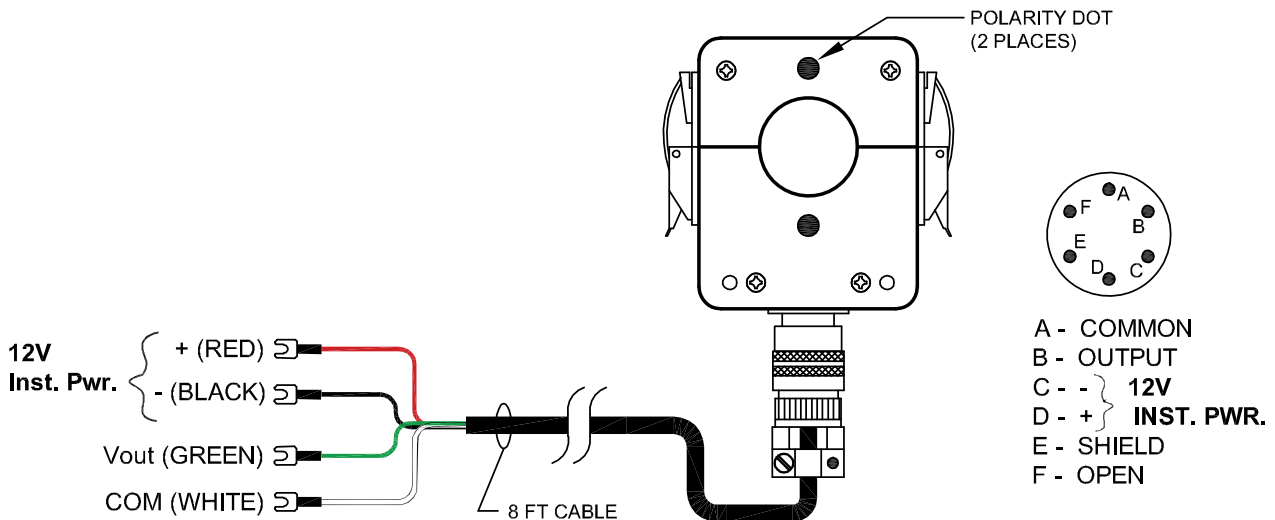


DIMENSIONS ARE IN INCHES

TOLERANCE:  $\pm 0.03$  IN

Dwg# 0902-01037-B Rev-B

**CONNECTION DIAGRAMS**



NOTE: "Red Dot" side of transducer must face the most positive circuit point for output polarity as shown.

Dwg# 0902-01037-B Rev-B